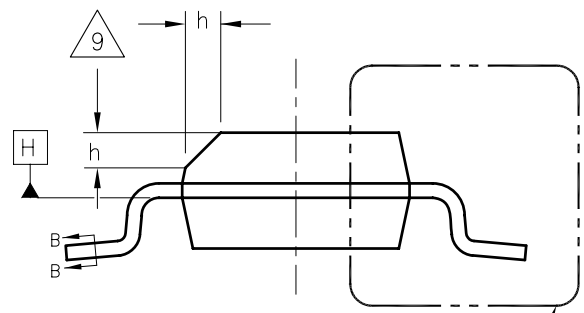
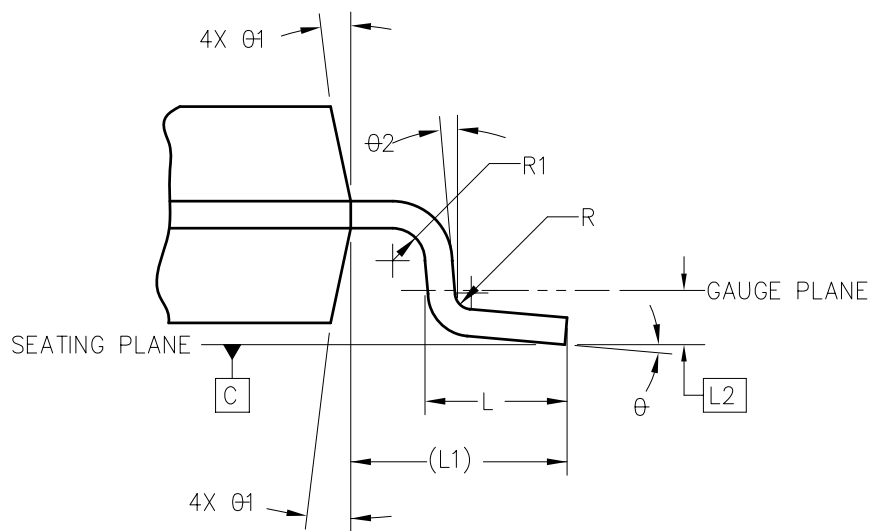


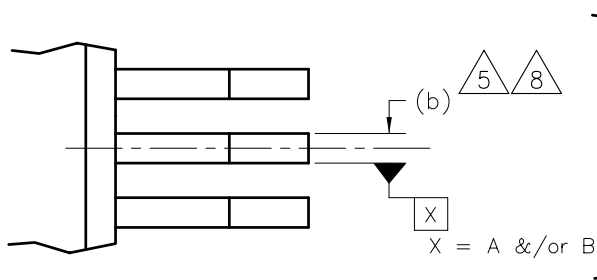
SECTION B-B
 7



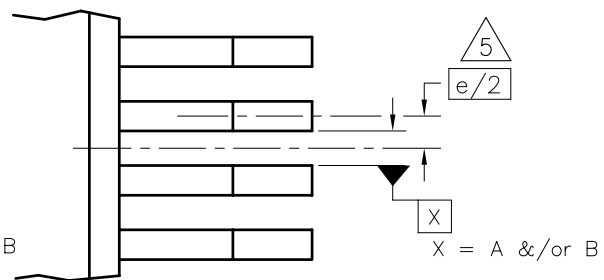
VIEW A-A
 SHEET 1
 SEE VIEW C



VIEW C



ODD LEAD SIDES
 TOPVIEW



EVEN LEAD SIDES
 TOPVIEW

FIGURE 2

JEDEC SOLID STATE PRODUCT OUTLINES	TITLE PLASTIC SMALL OUTLINE FAMILY 1.27 mm PITCH, 3.90 mm BODY WIDTH	ISSUE F	DATE August 2008	MS-012	SHEET 2 OF 5
--	--	------------	------------------------	--------	-----------------

SYMBOL	COMMON DIMENSIONS			NOTE
	MIN	NOM	MAX	
A2	1.25	—	—	
b	0.31	—	0.51	7,8
b1	0.28	—	0.48	7,8
c	0.10	—	0.25	7
c1	0.10	—	0.23	7
E	6.00 BSC			
E1	3.90 BSC			3,4
e	1.27 BSC			
L	0.40	—	1.27	
L1	1.04 REF			
L2	0.25 BSC			
R	0.07	—	—	
R1	0.07	—	—	
h	0.25	—	0.50	9
θ	0°	—	8°	
$\theta 1$	5°	—	15°	
$\theta 2$	0°	—	—	
NOTES	1,2			
REF	11-719S, 11-801S			
ISSUE	F			

SYMBOL	TOLERANCES OF FORM AND POSITION		NOTE
	MIN	MAX	
aaa	0.10		
bbb	0.20		
ccc	0.10		
ddd	0.25		
eee	0.10		
fff	0.15		
NOTES	1,2		
REF	11-719S		
ISSUE	E		

VARIATION TABLES

STANDARD

VARIATION SYMBOL	AA	AB	AC	NOTE
A	MIN	---		
	NOM	---		
	MAX	1.75		
A1	MIN	0.10		10
	NOM	---		
	MAX	0.25		
D BSC	4.90	8.65	9.90	3,4
N	8	14	16	6
NOTES	1,2			
REF	11-719S			
ISSUE	E			

THERMAL

VARIATION SYMBOL	BA	BB	BC	NOTE
A	MIN	---		
	NOM	---		
	MAX	1.70		
A1	MIN	0.00		10
	NOM	---		
	MAX	0.15		
D BSC	4.90	8.65	9.90	3,4
D1	MIN	1.50		11
	NOM	---		
	MAX	---		
E2	MIN	1.00		11
	NOM	---		
	MAX	---		
N	8	14	16	6
NOTES	1,2			
REF	11-719S			
ISSUE	E			

NOTES:

1. DIMENSIONING AND TOLERANCING PER ASME Y14.5M-1994.

2. DIMENSIONS IN MILLIMETERS (ANGLES IN DEGREES)



DIMENSION D DOES NOT INCLUDE MOLD FLASH, PROTRUSIONS OR GATE BURRS. MOLD FLASH, PROTRUSIONS OR GATE BURRS SHALL NOT EXCEED 0.15 mm PER END. DIMENSION E1 DOES NOT INCLUDE INTERLEAD FLASH OR PROTRUSION. INTERLEAD FLASH OR PROTRUSION SHALL NOT EXCEED 0.25 mm PER SIDE. D AND E1 DIMENSIONS ARE DETERMINED AT DATUM H



THE PACKAGE TOP MAY BE SMALLER THAN THE PACKAGE BOTTOM. DIMENSIONS D AND E1 ARE DETERMINED AT THE OUTERMOST EXTREMES OF THE PLASTIC BODY EXCLUSIVE OF MOLD FLASH, TIE BAR BURRS, GATE BURRS AND INTERLEAD FLASH, BUT INCLUDING ANY MISMATCH BETWEEN THE TOP AND BOTTOM OF THE PLASTIC BODY.



DATUMS A & B TO BE DETERMINED AT DATUM H.

6 "N" IS THE MAXIMUM NUMBER OF TERMINAL POSITIONS FOR THE SPECIFIED PACKAGE LENGTH.



THE DIMENSIONS APPLY TO THE FLAT SECTION OF THE LEAD BETWEEN 0.10 TO 0.25 mm FROM THE LEAD TIP.



DIMENSION 'b' DOES NOT INCLUDE THE DAMBAR PROTRUSION. ALLOWABLE DAMBAR PROTRUSION SHALL BE 0.10 mm TOTAL IN EXCESS OF THE "b" DIMENSION AT MAXIMUM MATERIAL CONDITION. THE DAMBAR MAY NOT BE LOCATED ON THE LOWER RADIUS OF THE FOOT.



THIS CHAMFER FEATURE IS OPTIONAL. IF IT IS NOT PRESENT, THEN A PIN 1 IDENTIFIER MUST BE LOCATED WITHIN THE INDEX AREA INDICATED



'A1' IS DEFINED AS THE VERTICAL DISTANCE FROM THE SEATING PLANE TO THE LOWEST POINT ON THE PACKAGE BODY EXCLUDING THE LID AND OR THERMAL ENHANCEMENT ON CAVITY DOWN PACKAGE CONFIGURATIONS.



'D1' AND 'E2' MINIMUM DIMENSIONS OF THERMALLY ENHANCED TYPES ARE VARIABLES DEPENDING ON DEVICE FUNCTION (DIE PADDLE SIZE). 'D1' AND 'E2' MAXIMUM DIMENSIONS CAN BE EQUAL TO 'D' AND 'E1' MAXIMUM DIMENSIONS. END USER SHOULD VERIFY ACTUAL SIZE OF EXPOSED THERMAL PAD FOR SPECIFIC DEVICE APPLICATION.

JEDEC SOLID STATE PRODUCT OUTLINES	TITLE PLASTIC SMALL OUTLINE FAMILY 1.27 mm PITCH, 3.90 mm BODY WIDTH	ISSUE F	DATE August 2008	MS-012	SHEET 4 OF 5
---	--	-------------------	--------------------------------	---------------	------------------------

Change Record

If the change involves any words added or deleted (excluding deletion of accidentally repeated words), the change is included. Punctuation changes may not be included.

Initial Issue:	Date: --	Item: --
--	--	--

Revision History

Issue: E	Date: September 2005	Item: 11.11-719S
Location	Changed from:	Changed to:
Page 1, Bottom view	Top View, Side View	Add Bottom View to show Exposed Thermal pad Zone
Page 3, Variation Tables	3-Non Thermal Options AA to AC	Add 3- Thermal Options BA to BC

Issue: F	Date: August 2008	Item: 11-801S
Location	Changed from:	Changed to:
Page 3, Common Dimensions	c and c1 Min: 0.17	0.10