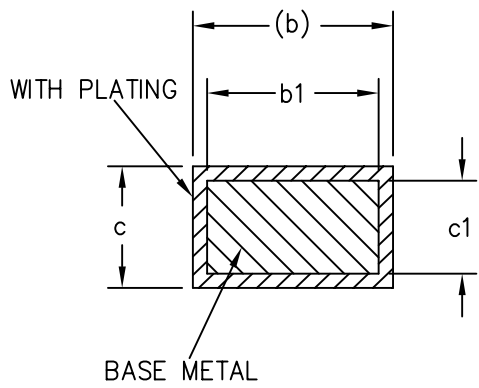
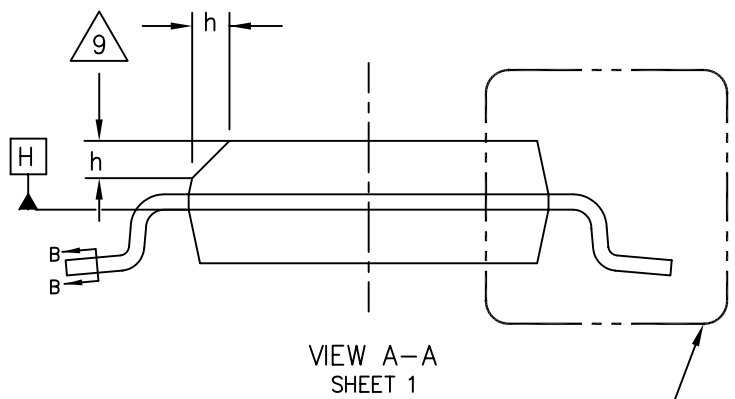


FIGURE 1

JEDEC SOLID STATE PRODUCT OUTLINES	THIS REGISTERED OUTLINE HAS BEEN PREPARED BY THE JEDEC JC-11 COMMITTEE AND REFLECTS A PRODUCT WITH ANTICIPATED USAGE IN THE ELECTRONICS INDUSTRY; CHANGES ARE LIKELY TO OCCUR.				
EXPOSED PAD PLASTIC SMALL OUTLINE FAMILY, 7.60 mm BODY WIDTH	PACKAGE DESIGNATOR (F)-PDSO /SOIC, SOP	ISSUE A	DATE MAY06	SHEET 1 OF 6	MO-271

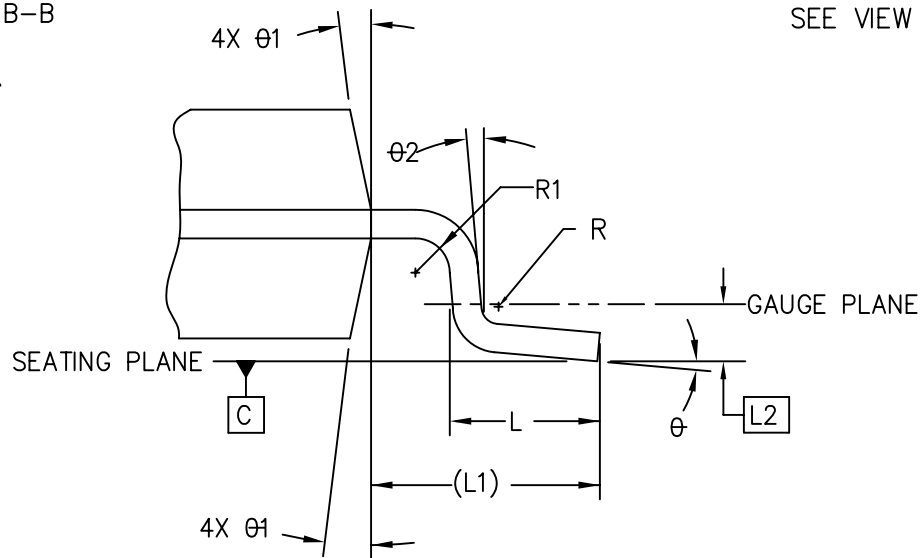


SECTION B-B

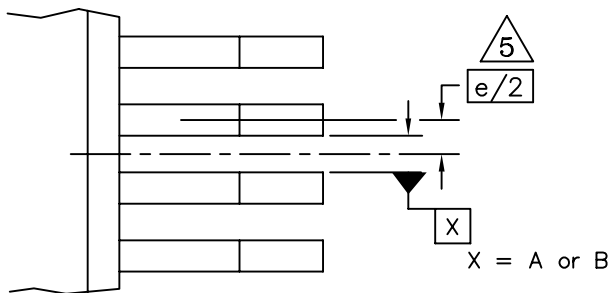


VIEW A-A
SHEET 1

SEE VIEW C



VIEW C



DETAIL D
ROTATED CCW 90°

JEDEC SOLID STATE PRODUCT OUTLINES	TITLE EXPOSED PAD PLASTIC SMALL OUTLINE FAMILY, 7.60 mm BODY WIDTH	ISSUE A	DATE MAY06	MO-271	SHEET 2 OF 6
--	---	------------	---------------	--------	-----------------

SYMBOL	COMMON DIMENSIONS			NOTE
	MIN	NOM	MAX	
A	—	—	2.45	
A1	0.00	—	0.10	10
A2	2.15	—	2.40	
c	0.20	—	0.33	7
c1	0.20	—	0.30	7
D	10.30 BASIC			3,4
E	10.40 BASIC			
E1	7.60 BASIC			3,4
L	0.55	0.70	0.85	
L1	1.40 REF			
L2	0.25 BASIC			
R	0.07	—	—	
R1	0.07	—	—	
h	0.25	—	0.40	9
ϕ	0°	—	8°	
ϕ1	5°	—	15°	
ϕ2	0°	—	—	
NOTE	1,2			
REF	11-738			
ISSUE	A			

SYMBOL	TOLERANCES OF FORM AND POSITION	NOTE
aaa	0.20	
bbb	0.20	
ccc	See Variations	
ddd	See Variations	
eee	0.10	
fff	0.20	
ggg	0.150	
NOTE	1,2	
REF	11-738	
ISSUE	A	

VARIATION TABLE

VARIATION ► SYMBOL ▼	AA	AB	BA	BB	CA	CB	DA	DB	NOTES	
b	MIN	0.31	0.31	0.30	0.30	0.25	0.25	0.200	0.200	7,8
	NOM	---	---	---	---	---	---	---	---	
	MAX	0.51	0.51	0.50	0.50	0.40	0.40	0.300	0.300	
b1	MIN	0.27	0.27	0.35	0.35	0.25	0.25	0.200	0.200	7,8
	NOM			0.40	0.40	0.30	0.30	0.250	0.250	
	MAX	0.48	0.48	0.45	0.45	0.35	0.35	0.280	0.280	
D1	MIN	6.50	4.50	6.50	4.50	6.50	4.50	6.50	4.50	
	NOM									
	MAX	7.50	5.50	7.50	5.50	7.50	5.50	7.50	5.50	
E2	MIN	4.00	4.00	4.00	4.00	4.00	4.00	4.00	4.00	
	NOM									
	MAX	5.00	5.00	5.00	5.00	5.00	5.00	5.00	5.00	
e	1.00 BSC.	1.00 BSC.	0.80 BSC.	0.80 BSC.	0.65 BSC.	0.65 BSC.	0.50 BSC.	0.50 BSC.		
N	20	20	24	24	28	28	36	36	6	
TOLERANCES OF FORM AND POSITION										
ccc	0.10	0.10	0.10	0.10	0.10	0.10	0.08	0.08		
ddd	0.20	0.20	0.20	0.20	0.12	0.12	0.08	0.08		
NOTES										
REF	11-738									
ISSUE	A									

NOTES:

1. DIMENSIONING AND TOLERANCING PER ASME Y14.5M-1994.
2. DIMENSIONS IN MILLIMETERS (ANGLES IN DEGREES)
3. DIMENSION D DOES NOT INCLUDE MOLD FLASH, PROTRUSIONS OR GATE BURRS. MOLD FLASH, PROTRUSIONS OR GATE BURRS SHALL NOT EXCEED 0.15 mm PER END. DIMENSION E1 DOES NOT INCLUDE INTERLEAD FLASH OR PROTRUSION. INTERLEAD FLASH OR PROTRUSION SHALL NOT EXCEED 0.25 mm PER SIDE. D AND E1 DIMENSIONS ARE DETERMINED AT DATUM H
4. THE PACKAGE TOP MAY BE SMALLER THAN THE PACKAGE BOTTOM. DIMENSIONS D AND E1 ARE DETERMINED AT THE OUTERMOST EXTREMES OF THE PLASTIC BODY EXCLUSIVE OF MOLD FLASH, TIE BAR BURRS, GATE BURRS AND INTERLEAD FLASH, BUT INCLUDING ANY MISMATCH BETWEEN THE TOP AND BOTTOM OF THE PLASTIC BODY.
5. DATUMS A & B TO BE DETERMINED AT DATUM H.
6. "N" IS THE MAXIMUM NUMBER OF TERMINAL POSITIONS FOR THE SPECIFIED PACKAGE LENGTH.
7. THE DIMENSIONS APPLY TO THE FLAT SECTION OF THE LEAD BETWEEN 0.10 TO 0.25 mm FROM THE LEAD TIP.
8. DIMENSION 'b' DOES NOT INCLUDE DAMBAR PROTRUSION. ALLOWABLE DAMBAR PROTRUSION SHALL BE 0.10 mm TOTAL IN EXCESS OF THE "b" DIMENSION AT MAXIMUM MATERIAL CONDITION. THE DAMBAR CANNOT BE LOCATED ON THE LOWER RADIUS OF THE FOOT.
9. THIS CHAMFER FEATURE IS OPTIONAL. IF IT IS NOT PRESENT, THEN A PIN 1 IDENTIFIER MUST BE LOCATED WITHIN THE INDEX AREA INDICATED
10. 'A1' IS DEFINED AS THE VERTICAL DISTANCE FROM THE SEATING PLANE TO THE LOWEST POINT ON THE PACKAGE BODY.
11. 'D1' AND 'E2' MINIMUM DIMENSIONS OF THERMALLY ENHANCED TYPES ARE VARIABLES DEPENDING ON DEVICE FUNCTION (DIE PADDLE SIZE). END USER SHOULD VERIFY ACTUAL SIZE OF EXPOSED THERMAL PAD FOR SPECIFIC DEVICE APPLICATION. THE THERMAL VARIATIONS IN THIS REGISTRATION ARE IN COMPLIANCE WITH JEP95, SECTION 3, SPP-022.
12. A COMPANY HAS ISSUED PATENTS THAT MAY APPLY TO THIS REGISTRATION. IF THE CURRENT ISSUED PATENTS OR LATER PATENTS DO APPLY, THIS COMPANY INTENDS TO COMPLY WITH THE JEDEC PATENT POLICY. REFERENCE PATENTS ARE AS FOLLOWS:

STMicroelectronics Inc.: European Patent # EP1557881

JEDEC SOLID STATE PRODUCT OUTLINES	TITLE EXPOSED PAD PLASTIC SMALL OUTLINE FAMILY, 7.60 mm BODY WIDTH	ISSUE A	DATE MAY06	MO-271	SHEET 5 OF 6
--	---	------------	---------------	--------	-----------------

Change Record

if the change involves any words added or deleted (excluding deletion of accidentally repeated words), the change is to be included below. Punctuation changes may or may not be included.

Initial Issue: A	Date: May 2006	JC 11 Item Number : 11-738

Change Record History

Issue:	Date :	Item Number
Location	Changed from:	Changed to:

Issue:	Date :	Item Number
Location	Changed from:	Changed to:

Issue:	Date :	Item Number
Location	Changed from:	Changed to: